

14232111

Socomec SLB Handle - Ext. Mount S2, IP 65, P/lock, BL/BK, suits 3/4P 125 - 630A and 6/8P 125 - 160A



Component type	Handle for power circuit breaker
Range	SLB
Model	N/A
Product status	Existing

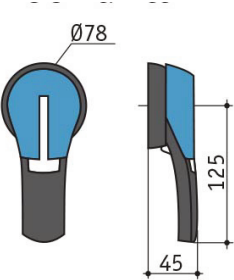
Compact switching solutions from 125A up to 5000A, the SLB range of load break switches are a proven, reliable design. Severe load duty categories (AC-22 and AC-23) are well suited to the arduous switching of motors, main switch isolation and disconnection of other loads.

CONSTRUCTION

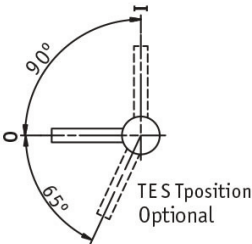
Suitable for switch disconnecter	Yes
Colour	Blue
With door interlock	Yes
Mounting method	Screw mounting
Front shield size	Other
Degree of protection (IP), mounted	IP65
Padlock locking	Yes

MECHANICAL

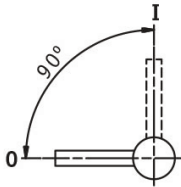
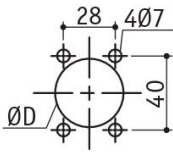
DIMENSIONAL DIAGRAM



S2 handle



S type handle – front operation
Conventional fixing (from rear): D = 31 to 37 mm
Fast fixing (external, door closed): D = 37 mm



S type handle – side operation
Conventional fixing (from rear): D = 31 to 37 mm
Fast fixing (external, door closed): D = 37 mm

