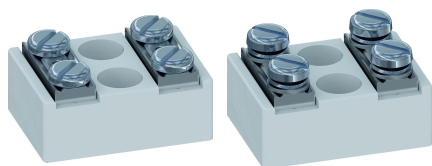


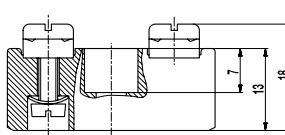
339-K / 339-KF

Flat screw terminals

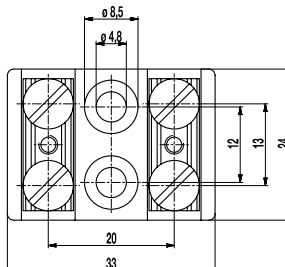
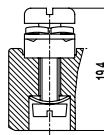
Medium-duty version with grooved flat terminals, 2-pole



339-K



339-KF



K-versions have two mounting holes at the center.

GENERAL INFORMATION

No. of poles 2

TECHNICAL DATA

Clamping Range	<i>solid / stranded / AWG</i> 0,5 - 4 mm ² / 0,5 - 1,5 mm ² / 20 - 16 [1][2]
Rated Cross Section	4 mm ²
Wire Stripping Length	10 mm ± 0,5 mm
Rated Insulation Voltage	450 V acc. to EN 60998-1
Torque	1,2 Nm
Fixing Holes	ø 4,8 mm
Distance	12 mm
Base mounting	Recommendation: Screw M4 with matching washer; max. torque 1.5 Nm; use of an elastic & insulating substrate.
Other specifications	Terminal strips must not be strung together without considering the clearance and creepage distances. Rated values apply to use in combination with insulated substrates.

MATERIAL

Base material	Technical ceramics
Comparative Tracking Index	CTI ≥ 600
Insulating Group	I
Temperature Range	-40°C up to 250°C
Spring washer	Zinc plated steel
Screw terminal	Nickel plated brass
Screw	M4; M3; Zinc plated steel
Washer	Zinc plated steel

OPTIONS / ACCESSORIES

- Versions only with washers

[1] The clamping range for flexible and AWG conductors was determined using ferrules. Use of flexible conductors without ferrules is not recommended.

[2] Per pole two wires of identical cross-section can be connected.

CONFIGURATIONS

Item	Article number	PU
339-K	52.636.006	144
339-KF	50.636.006	144