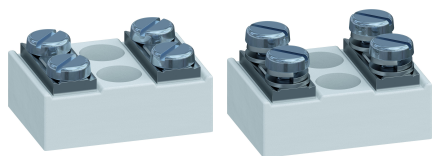


360-K / 360-KF

Flat screw terminals

Heavy-duty version with grooved flat terminals, 2-pole



GENERAL INFORMATION

Pitch	24 mm
No. of poles	2

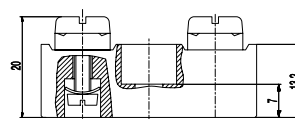
TECHNICAL DATA

Clamping Range	<i>solid / stranded / AWG</i> 0,5 - 6 mm ² / 0,5 - 2,5 mm ² / 20 - 14 AWG [1][2]
Rated Cross Section	6 mm ²
Wire Stripping Length	11,5 mm ± 1 mm
Rated Insulation Voltage	750 V acc. to EN 60998-1
Rated Current	41 A
Torque	2,0 Nm
Fixing Holes	ø 5,8 mm
Distance	13 mm
Base mounting	Recommendation: Screw M4 with matching washer; max. torque 1.5 Nm; use of an elastic & insulating substrate.
Other specifications	Terminal strips must not be strung together without considering the clearance and creepage distances. Rated values apply to use in combination with insulated substrates.

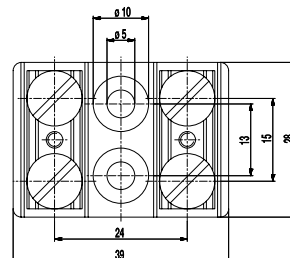
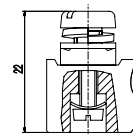
CONFIGURATIONS

Item	Article number	PU
360-K	53.636.008	50
360-KF	50.636.008	50

360-K



360-KF



MATERIAL

Base material	Technical ceramics
Comparative Tracking Index	CTI ≥ 600
Insulating Group	I
Temperature Range	-40°C up to 250°C
Spring washer	Zinc plated steel
Screw terminal	Nickel plated brass
Screw	M5; M3; Zinc plated steel
Washer	Zinc plated steel

OPTIONS / ACCESSORIES

- Versions only with washers

[1] The clamping range for flexible and AWG conductors was determined using ferrules. Use of flexible conductors without ferrules is not recommended.

[2] Per pole two wires of identical cross-section can be connected.